

## Dial-Up Configuration for Apple Mac OS X

These instructions should work for nearly all Internet Service Providers. Please contact your ISP for any specific information and requirements.

Please be aware that local and long distance charges apply whenever you are connected to your Internet Service Provider. Bradley University is **not responsible** for any of these charges. You will need to contact your phone company to determine if your call to your ISP will be billed as a long distance call.

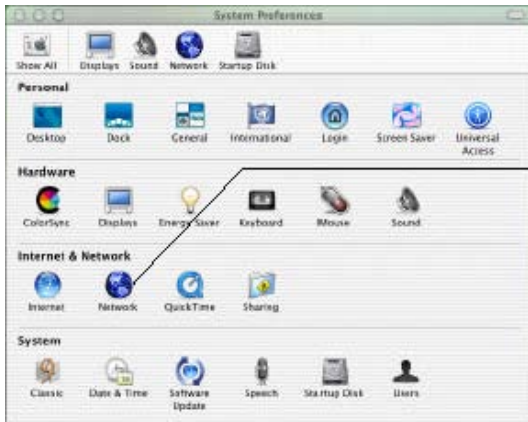
Before you can setup a connection to your ISP, there is some information that you will need. This includes:

**Your User name:** Your login name on your Internet Service Provider.

**Your Password:** The password provided by your ISP.

**Dialup Access Phone Number:** Contact your ISP for this number.

### STEP 1 - Set Your Computer to Dial up



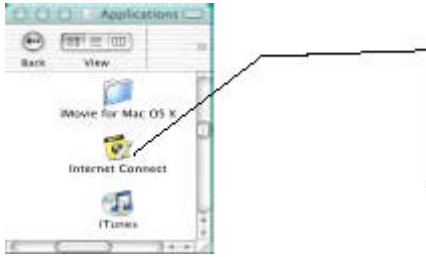
Launch the System Preferences Panel (the light switch icon in the Dock panel).

- Click on **Network**
- Select **Internal Modem**
- Click on the **PPP** tab in the Network Preferences Panel



- Type **ISP Dialup** in the **Service Provider** box. Enter the **Phone Number** in the **Telephone** box.
- Enter your **Dialup User Name** in the **Account Name** box.
- Enter your **Dialup Password** in the **Password** box. Click on the **Save Password** box.
- Click **Apply Now**.

## STEP 2 - Connect to your Internet Service Provider



- Launch the Finder from the Dock Panel.
- Click on **Applications** at the top of the finder.
- Click on the **Internet Connect Application** in the Finder.

This will launch the Internet Connect Application.



Click on **Show Modem Status**. This will create an icon in the menu bar.

Verify the dialup phone number, user name, and that the password is filled in. You won't be able to read the password, just see that the box is not empty.

Click on the **Connect** button in the **Modem** Window. The computer should dial the number, connect, and verify your username & password.

That's it ! You are now connected. You can now use your Web Browser, FTP, SSH or other networking program through your dialup connection.



If you close the Modem Window, you can remain connected. Look for the Modem Status Icon in the Menu Bar at the top right of the screen.

Double-click on this icon to bring back the Modem Control Panel.

**Disconnecting:**

You can disconnect your connection by clicking the Disconnect button on the Modem Control Panel.